

Level 4

**** ADDITION TO ALL PAST LEVELS ****

**** Be sure to review past levels when studying ****

Intervals:

M2 (major second)

interval consists of 2 notes that are 1 *whole step* distance apart

m2 (minor second)

interval consists of 2 notes that are 1 *half step* distance apart

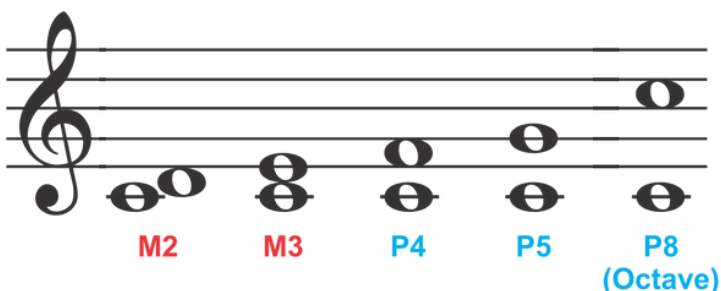
M3 (major third) interval consists of 2 notes that are 2 *whole step* distance apart

m3 (minor third) interval consists of 2 notes that are 3 *half step* distance apart

P4 (perfect fourth) interval consists of 2 notes that are 5 *half steps* distance apart

P5 (perfect fifth) interval consists of 2 notes that are 7 *half steps* distance apart

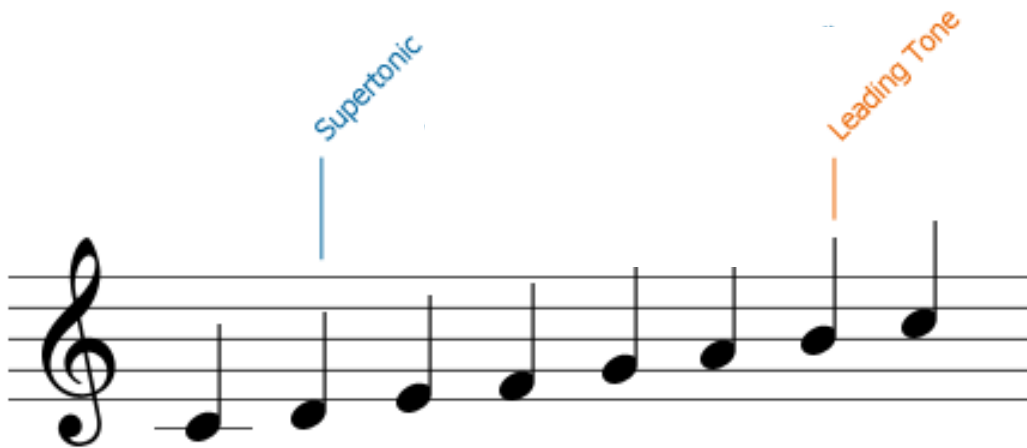
P8 (perfect octave) interval consists of 2 notes that are 12 *half steps* distance apart (one octave apart)



Scale Degrees:

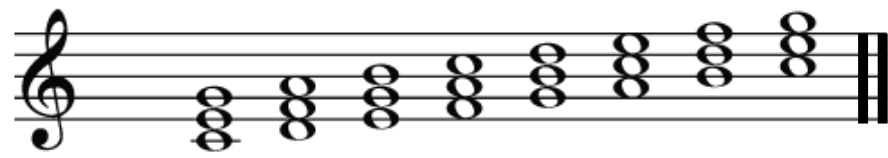
Supertonic - the 2nd degree of the scale

Leading Tone - the 7th degree of the scale

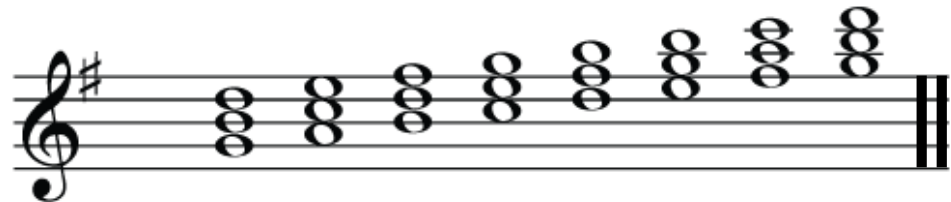


Scales and Chords

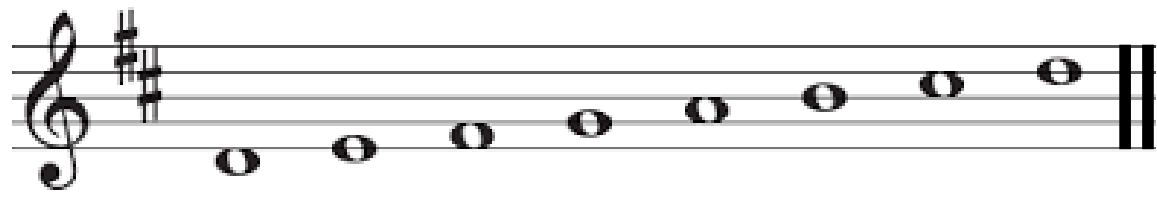
C major



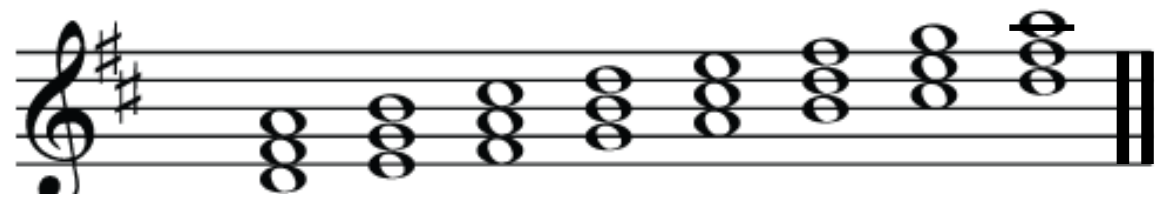
G major



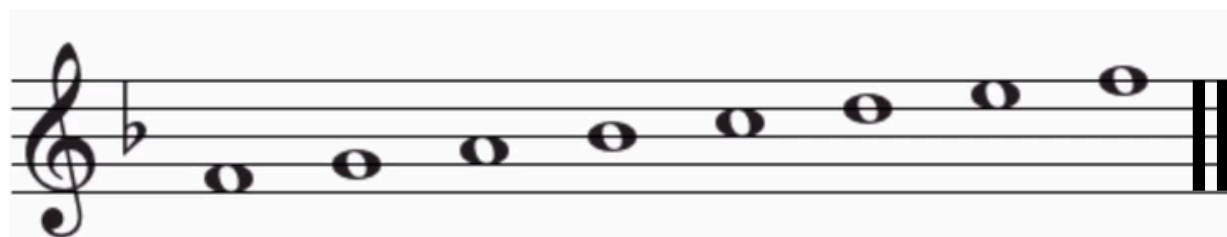
D major



D E F# G A B C# D

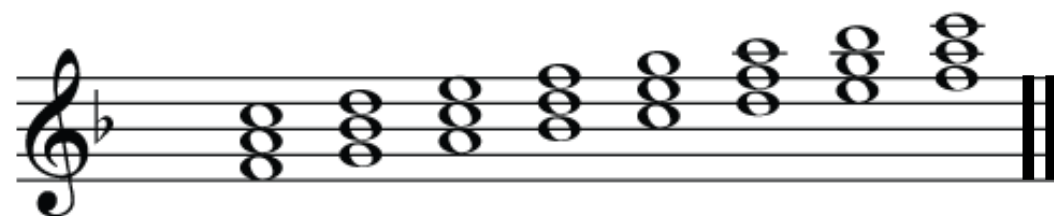


F major



Musical notation for the F major scale in treble clef, showing the notes F, G, A, B \flat , C, D, E, F.

F G A B \flat C D E F



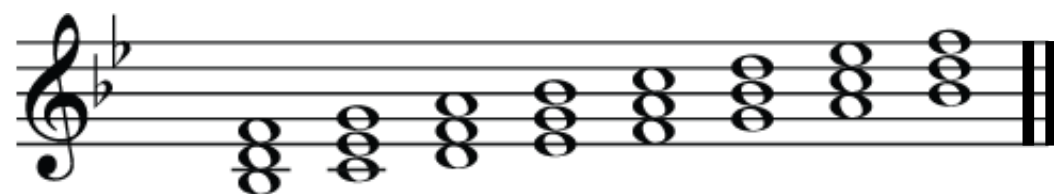
Musical notation for the F major triad in treble clef, showing the notes F, A, and C.

B flat major



Musical notation for the B flat major scale in bass clef, showing the notes B \flat , C, D, E \flat , F, G, A, B \flat .

B \flat C D E \flat F G A B \flat



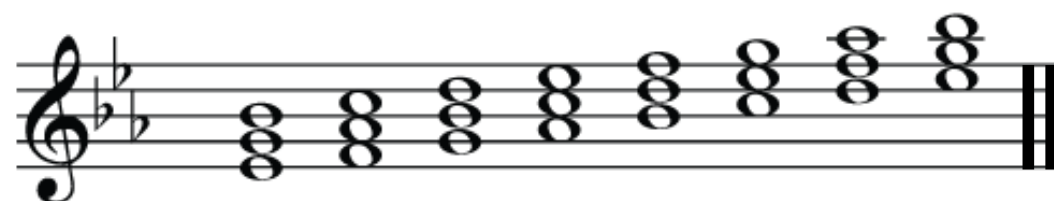
Musical notation for the B flat major triad in treble clef, showing the notes B \flat , D, and F.

E flat major



Musical notation for the E flat major scale in treble clef, showing the notes E \flat , F, G, A \flat , B \flat , C, D, E \flat .

E \flat F G A \flat B \flat C D E \flat

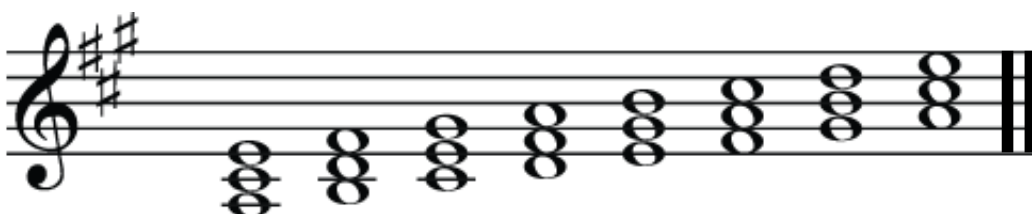


Musical notation for the E flat major triad in treble clef, showing the notes E \flat , G, and B \flat .

A major



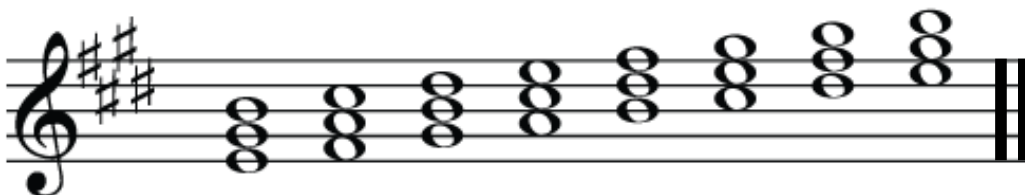
A B C# D E F# G# A



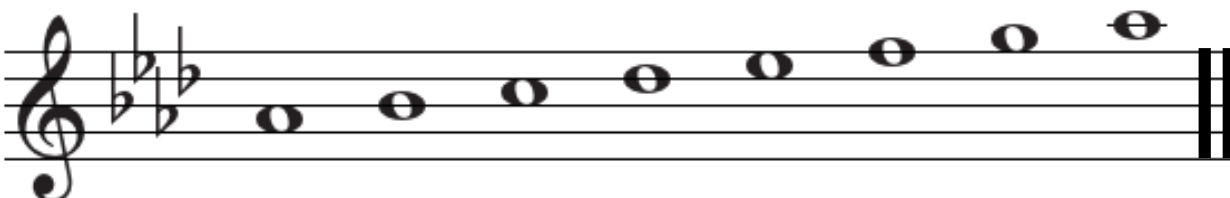
E major



E F# G# A B C# D# E



A flat major



Ab Bb C Db Eb F G Ab



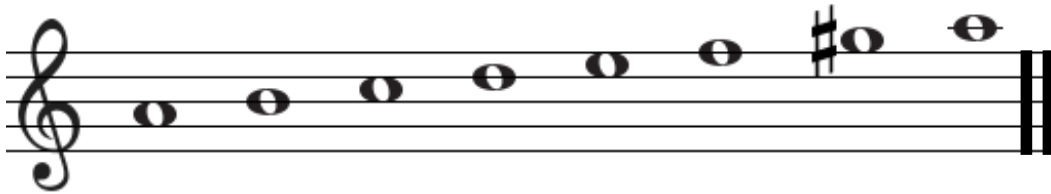
A minor

A minor scale



A B C D E F G A

A harmonic minor scale

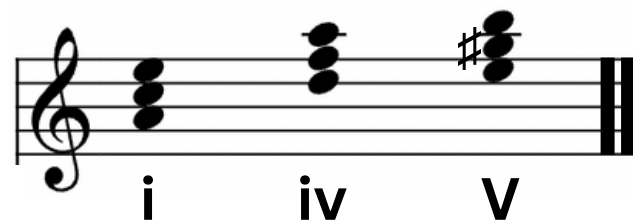


A B C D E F G# A

A melodic minor scale



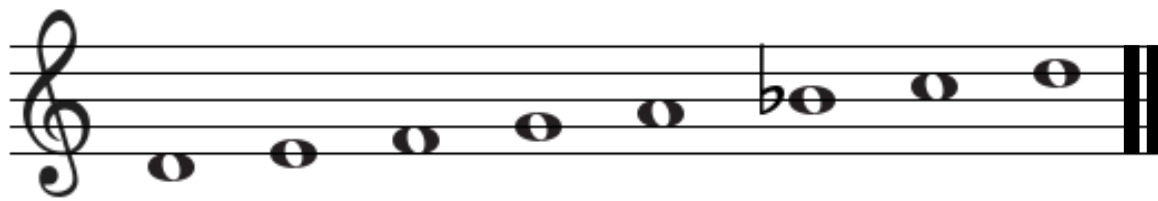
A B C D E F# G# A



i iv V

D minor

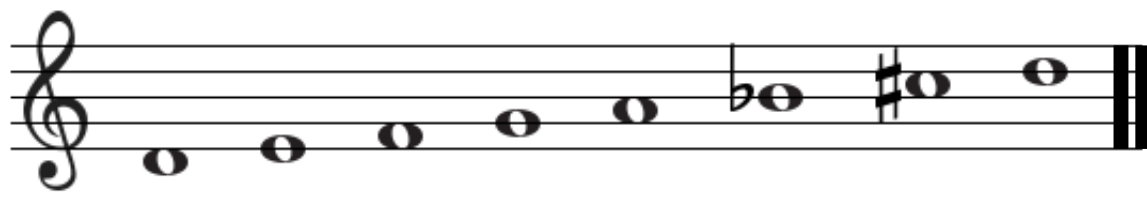
D minor scale



Musical notation for the D minor scale in treble clef. The notes are D, E, F, G, A, B \flat , C, D. The scale is written on a single staff with a treble clef and a key signature of one flat. The notes are placed on the lines and spaces of the staff: D on the first line, E on the first space, F on the second line, G on the second space, A on the third line, B \flat on the third space, C on the fourth line, and D on the fourth space. The scale ends with a double bar line.

D E F G A B \flat C D


D harmonic minor scale



Musical notation for the D harmonic minor scale in treble clef. The notes are D, E, F, G, A, B \flat , C \sharp , D. The scale is written on a single staff with a treble clef and a key signature of one flat. The notes are placed on the lines and spaces of the staff: D on the first line, E on the first space, F on the second line, G on the second space, A on the third line, B \flat on the third space, C \sharp on the fourth line, and D on the fourth space. The scale ends with a double bar line.


D E F G A B \flat C \sharp D

D melodic minor scale



Musical notation for the D melodic minor scale in treble clef. The notes are D, E, F, G, A, B, C \sharp , D. The scale is written on a single staff with a treble clef and a key signature of one flat. The notes are placed on the lines and spaces of the staff: D on the first line, E on the first space, F on the second line, G on the second space, A on the third line, B on the third space, C \sharp on the fourth line, and D on the fourth space. The scale ends with a double bar line.

D E F G A B C \sharp D



Musical notation for the D minor triad in treble clef. The notes are D, F, A. The triad is written on a single staff with a treble clef and a key signature of one flat. The notes are placed on the lines and spaces of the staff: D on the first line, F on the second line, and A on the third line. The triad ends with a double bar line.

i iv V


E minor

E minor scale




E F# G A B C D E

E harmonic minor scale




E F# G A B C D# E

E melodic minor scale



E F# G A B C# D# E



i iv V

B minor

B minor scale



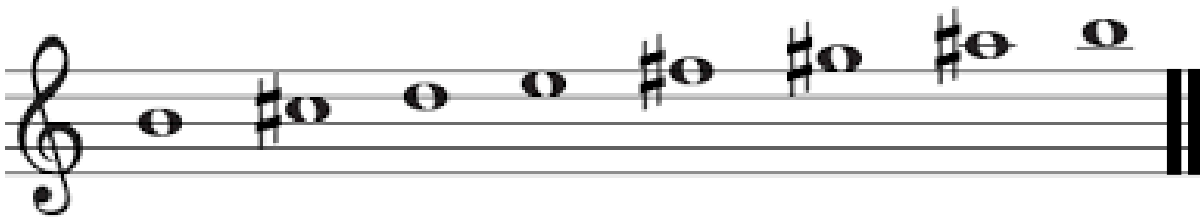
B C# D E F# G A B

B harmonic minor scale



B C# D E F# G A# B

B melodic minor scale



B C# D E F# G# A# B



i iv V

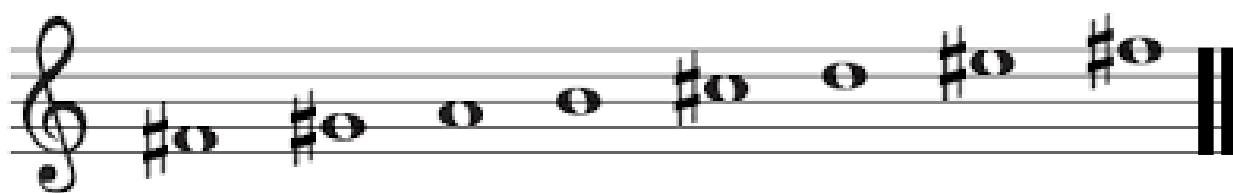
F sharp minor

F-sharp minor



F# G# A B C# D E F#

F-sharp harmonic minor scale

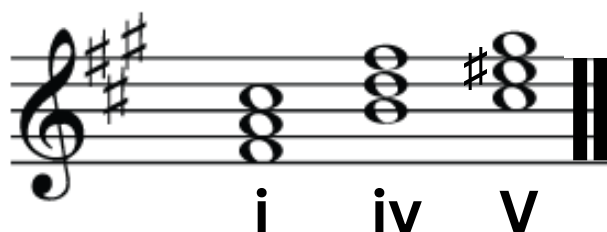


F# G# A B C# D E# F#

F-sharp melodic minor scale



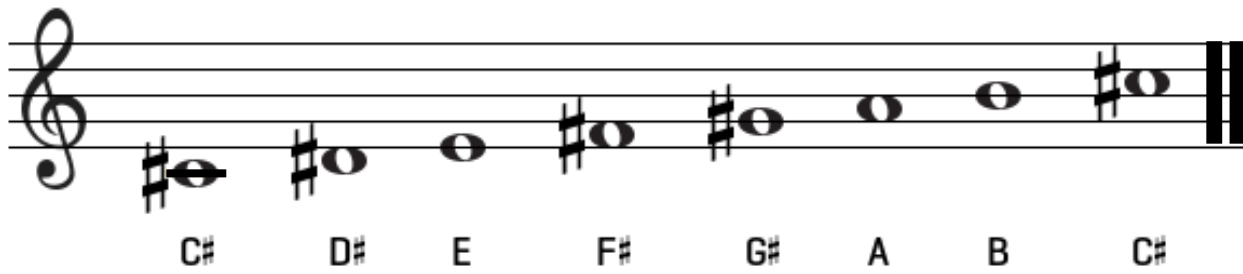
F# G# A B C# D# E# F#



i iv V

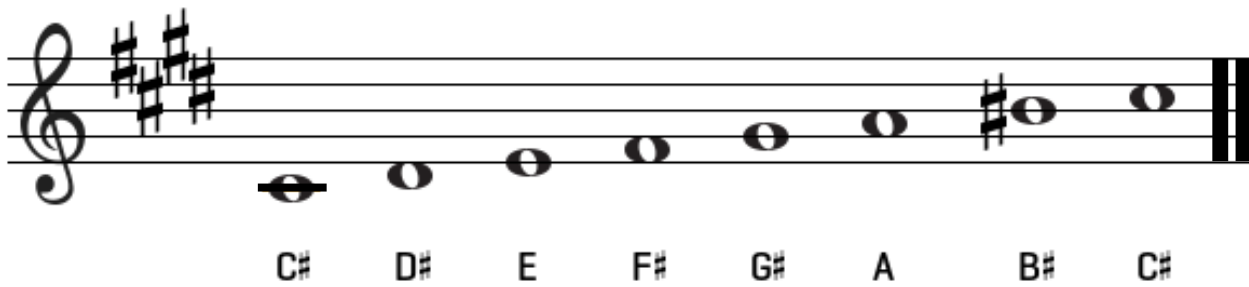
C sharp minor

C-sharp minor scale



C# D# E F# G# A B C#

C-sharp harmonic minor key signature




C# D# E F# G# A B# C#

C-sharp melodic minor scale




C# D# E F# G# A# B# C#



i iv V

C minor


C minor scale



Musical notation for the C minor scale in treble clef. The scale consists of the following notes: C, D, E \flat , F, G, A \flat , B \flat , C. The notes are written as half notes on a five-line staff.

C D E \flat F G A \flat B \flat C


C harmonic minor scale



Musical notation for the C harmonic minor scale in treble clef. The scale consists of the following notes: C, D, E \flat , F, G, A \flat , B, C. The notes are written as half notes on a five-line staff.

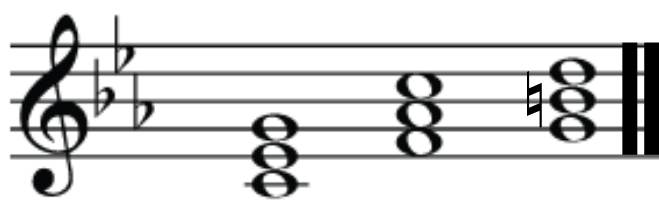
C D E \flat F G A \flat B C

C melodic minor scale



Musical notation for the C melodic minor scale in bass clef. The scale consists of the following notes: C, D, E \flat , F, G, A, B, C. The notes are written as half notes on a five-line staff.

C D E \flat F G A B C

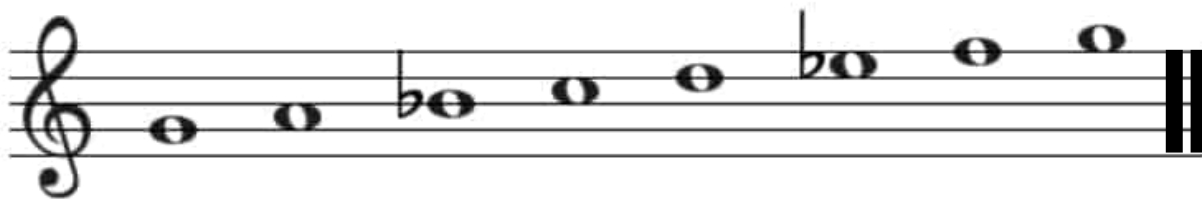


Musical notation for the C minor triad in treble clef. The triad consists of the notes C, E \flat , and G. The notes are written as quarter notes on a five-line staff.

i iv V

G minor

G minor scale



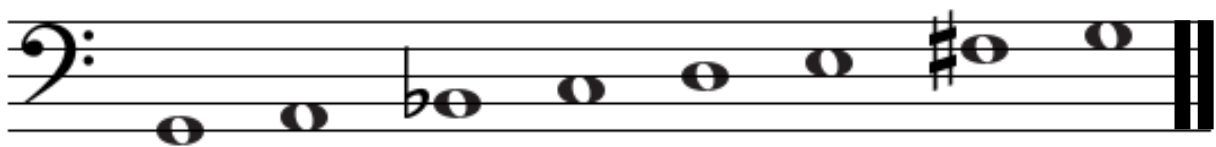
G A B \flat C D E \flat F G

G harmonic minor scale

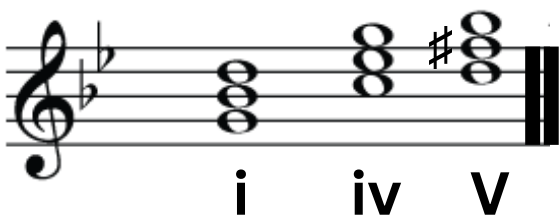


G A B \flat C D E \flat F \sharp G

G melodic minor scale



G A B \flat C D E F \sharp G



i iv V

Whole Tone Scale: a scale where each note is separated by the interval of a whole tone.



Blues Scale: refers to several different scales with different pitches and related characteristics



Pentatonic Scale: a scale with 5 notes per octave

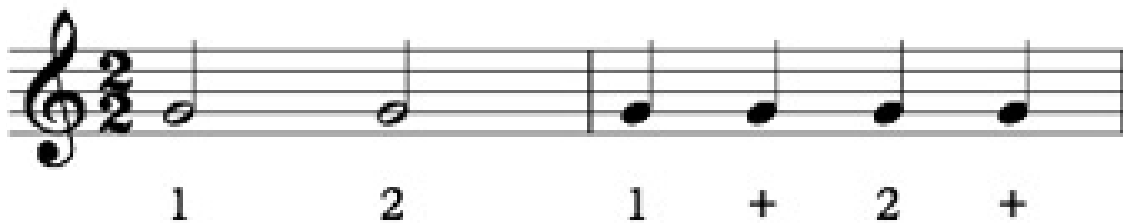


Rhythm

Simple Meters: 2/4, 3/4, 4/4



Simple Duple Meter: 2/2 (cut time)

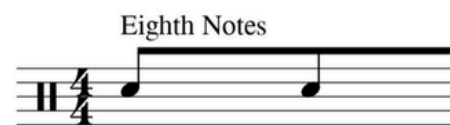
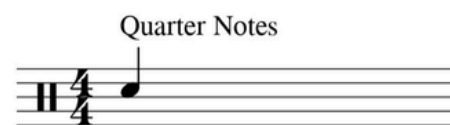


Compound meters: 6/8, 9/8, 12/8



16th notes and rests

- has 2 flags on the note
- 2 sixteenth notes = 1 eighth note
- 4 sixteenth notes = 1 quarter note
- applies to rests the same



1

1

&

1

e

&

a

Tempi/Tempo Changes

Grave: Slower

Largo: Very Slow

Presto: Very Fast

Vivace: Fast and Lively

Allargando: (used as direction) gradually becomes slower and slower

Ritenuato: (used as direction) an abrupt slowing down

Rallentando: Slowing down

Musical Instruments (Orchestral):

Strings: Violin, Viola, Cello, Bass, Double bass

Woodwinds:

Single reed: Clarinet, Saxophone

Double reed: Oboe, Bassoon

Open mouthpiece: Flute, Piccolo

Brass: Trombone, Trumpet, Tuba, French Horn

Percussion: Bells, drums, Tambourines, Cymbals, Timpani

The piano is considered *BOTH* a percussion and a string instrument